

Revised April 2026
MMEA Western District – Junior Festival Auditions
Blues Scales
for jazz auditions only

♩ = 84

Swing

If two octaves are shown, choose your preferred octave.

Alto & Bari Sax

G Blues Scale
(Concert B♭)

D Blues Scale
(Concert F)

Tenor Sax
Trumpet

C Blues Scale
(Concert B♭)

G Blues Scale
(Concert F)

Trombone
Bass

B♭ Blues Scale

F Blues Scale

Piano
Guitar
Vibes

B♭ Blues Scale

F Blues Scale

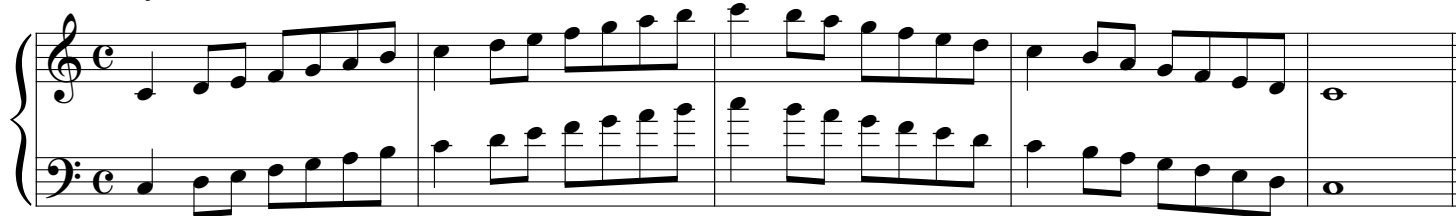
Revised June 2025

MMEA Western District – Junior Festival Auditions

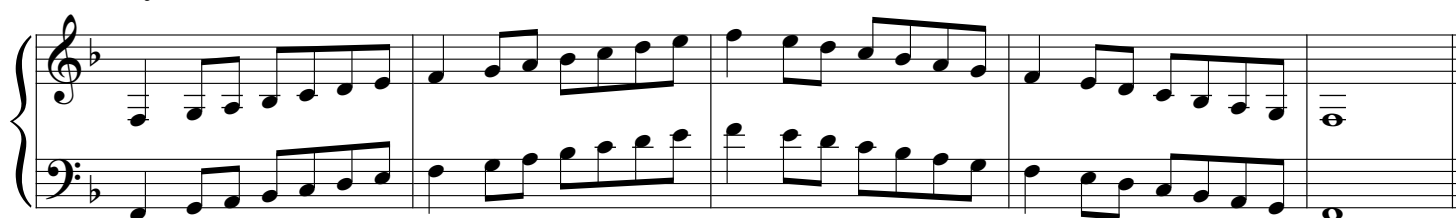
Jazz Piano Scales

♩ = 84

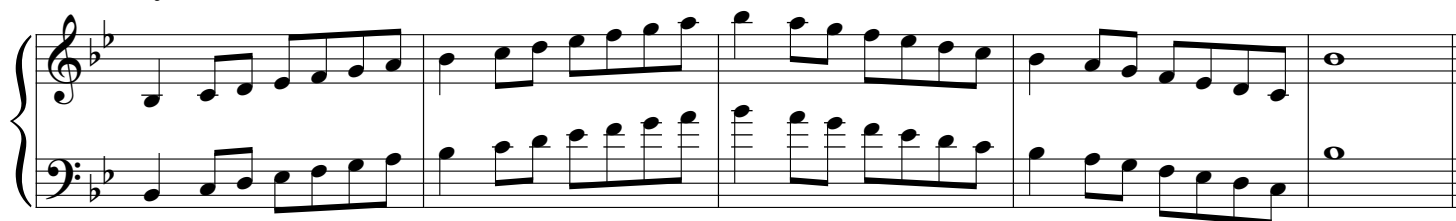
C Major



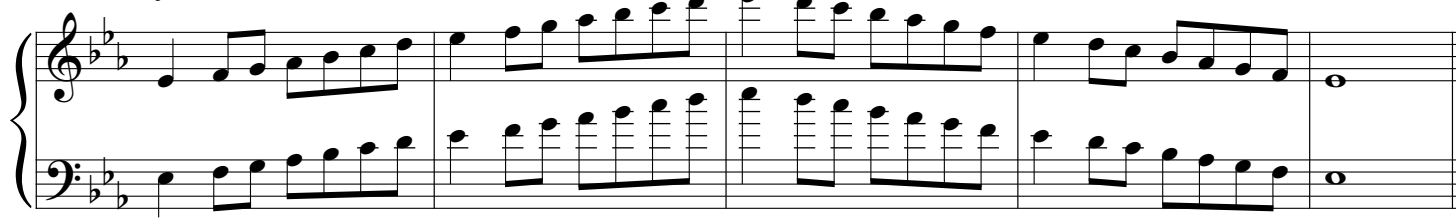
F Major



Bb Major



Eb Major



Ab Major



Jazz Piano Scales

G Major

Two staves (treble and bass clef) showing the G Major scale. The treble staff starts on G4 and the bass staff starts on G3. The scale is played in eighth notes, ascending and then descending. The key signature has one sharp (F#).

D Major

Two staves (treble and bass clef) showing the D Major scale. The treble staff starts on D4 and the bass staff starts on D3. The scale is played in eighth notes, ascending and then descending. The key signature has two sharps (F# and C#).

A Major

Two staves (treble and bass clef) showing the A Major scale. The treble staff starts on A4 and the bass staff starts on A2. The scale is played in eighth notes, ascending and then descending. The key signature has three sharps (F#, C#, and G#).

C Chromatic

Two staves (treble and bass clef) showing the C Chromatic scale. The treble staff starts on C4 and the bass staff starts on C3. The scale is played in eighth notes, ascending and then descending. The key signature has no sharps or flats. Triplet markings (3) are present above and below the notes.

Two staves (treble and bass clef) showing the C Chromatic scale. The treble staff starts on C4 and the bass staff starts on C3. The scale is played in eighth notes, ascending and then descending. The key signature has no sharps or flats. Triplet markings (3) are present above and below the notes.

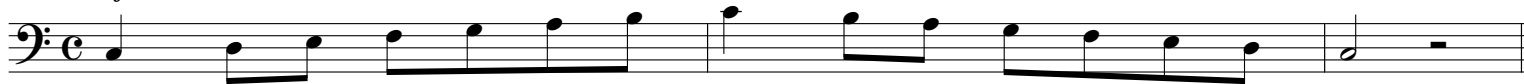
Revised June 2025

MMEA Western District – Junior Festival Auditions

Jazz Bass Scales

♩ = 84

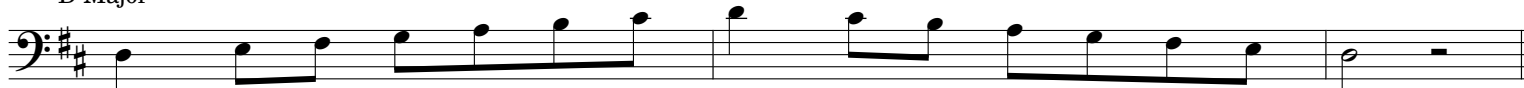
C Major



G Major



D Major



A Major



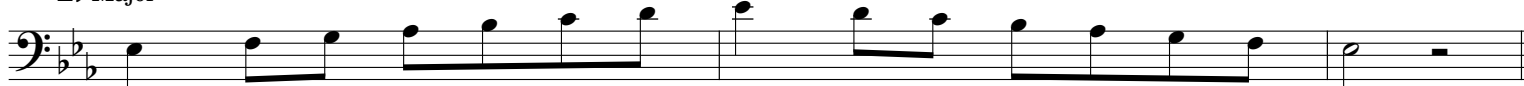
F Major



Bb Major



Eb Major



Ab Major



MMEA Western District – Junior Festival Auditions

♩ = 84

[illegible]

The musical notation for the 'C' chromatic exercise consists of two staves. The first staff begins with a treble clef and a key signature of one sharp (F#). It contains two measures of music, each featuring a triplet of eighth notes. The notes in the first measure are C4, D4, and E4, and the notes in the second measure are F#4, G4, and A4. The second staff begins with a treble clef and a key signature of one flat (Bb). It contains two measures of music, each featuring a triplet of eighth notes. The notes in the first measure are Bb3, Ab3, and Gb3, and the notes in the second measure are Fb3, Eb3, and Db3. The exercise is designed to be played at a tempo of 120 beats per minute.

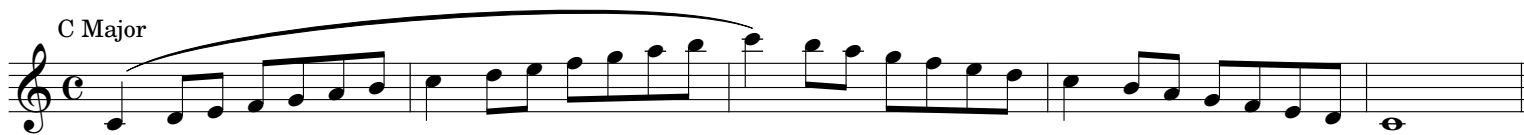
Revised June 2025

MMEA Western District – Junior Festival Auditions

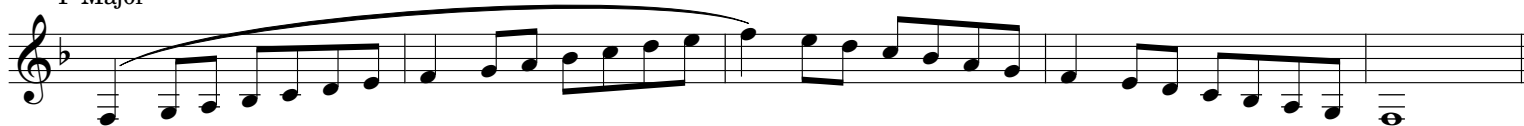
Jazz Vibes Scales

♩ = 84

C Major



F Major



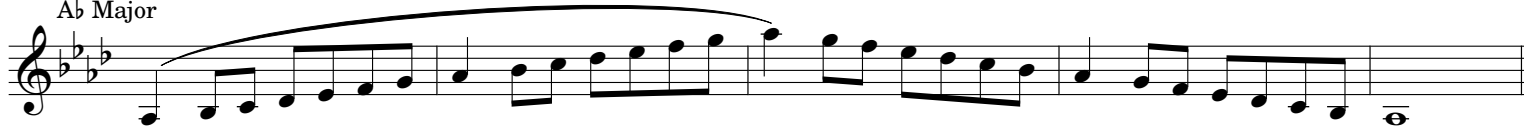
Bb Major



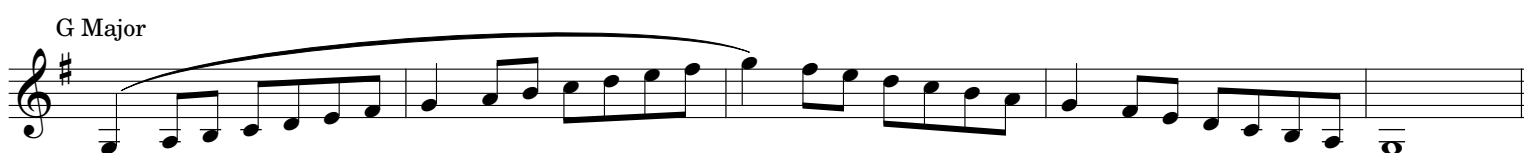
Eb Major



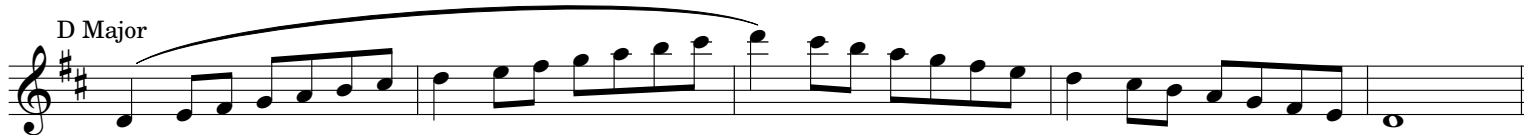
Ab Major



G Major



D Major



A Major



C Chromatic

